



THE KING'S
POLAR
BEAR

WHAT TO EXPECT GUIDE

Information to support you to
enjoy your visit to watch The
King's Polar Bear

AUTUMN/WINTER 2024

**FULL
HOUSE**

What to expect

The King's Polar Bear is a 50 minute play made for children aged 4+ and their families, but it is suitable for all to attend. This guide will provide you with some information that we hope will help you feel more prepared so that you can look forward to and enjoy the show.

The King's Polar Bear is a new show, so at the moment we can't share any images from the show with you. However this guide will be updated by the end of October to include show images.

If this guide does not answer a question you have, or you would like to discuss the show or an access need with someone from Full House Theatre you can email info@fullhouse.org.uk or call 01525 630783

Venues

We will be touring to a number of different venues with this show. Venues have their own access and visitor information which might be useful in planning your visit. We have provided some links below.

Stamford Arts Centre

<https://www.stamfordartscentre.com/about/access/>

The Berry Theatre Eastleigh

<https://www.theberrytheatre.co.uk/your-visit/inclusive/>

Pegasus Theatre Oxford

<https://pegasustheatre.org.uk/accessibility/>

The Met, Bury

<https://themet.org.uk/visit/access/>

Half Moon Theatre, London

<https://www.halfmoon.org.uk/access/>

Z- Arts, Manchester

<https://www.z-arts.org/home/your-visit-to-z-arts/access/>

The Hat Factory Arts Centre, Luton

<https://www.culturetrust.com/venues/hat-factory-arts-centre>

Relaxed Shows

Every performance of The King's Polar Bear is 'Relaxed' this means that:

You can talk or make noise when you need to.

You will have your own seat, but you can move, whether that is to stretch, wiggle or leave the space. We just ask that you don't come onto the stage unless invited.

If you leave you can come back in at any time.

There is a separate space you can go to during the show if you need to leave, but you can come back.

The sound will not be too loud. You are welcome to wear ear defenders if that makes you more comfortable.

The space is well lit, but lights will not be shone directly on the audience.

The lights will change on stage but always in a gentle way, it might be dark sometimes but it will never be a complete black out.

About the show

This guide does not currently outline the full plot, but this information is available if you contact us.

A Summary of the Plot (skip this page if you want the story to be a surprise)

Two Kings from different lands strike up a friendship and begin to write to each other, one is from a green and pleasant land and one is from a frozen paradise. After writing to each other for some time they meet and catch a Polar Bear for King Henry to take home to his Green and Pleasant Land.

When the Polar Bear arrives in his new home he becomes part of King Henry's exotic circus and lives in the Great Tower, where he is trapped. The Polar Bear falls into a deep hibernation spanning years and when he wakes up the world is changed, with factories, fire and smoke. Eventually the Polar Bear is freed and begins a voyage home across the sea, meeting sea creatures along the way. But, when the Polar Bear finally gets home they find their frozen paradise is no more and once again they fall into a deep hibernation.

Whilst the Polar Bear sleeps the Kings realise the damage that they are responsible for and they decide to take action to change, with the help of 'The Brains' and the Kings and Queens of other lands. In this part of the show the whole audience has a part to play in helping 'The Brains' to harness the power of the natural world to heal and reverse the damage that was caused.

Finally the Polar Bear wakes up from their hibernation to find their home The Pole restored and many animals returned. In this new landscape the Polar Bear thrives.

About the show

The King's Polar Bear Themes:

Fantasy Adventure

Friendship

Imprisonment

Environmental Crisis

Being far away from home

Hope

This show does not have a linear plot.

The story is not set in one particular period of time.

The show is highly visual.

The Cast

This is Adrien, Ben and Tamara; they are the cast of our show!
They are professional actors.



They will play lots of different characters throughout the play.
They will tell you the story and sometimes they will sing.

They will use objects and costume to help them pretend to be
many characters.

They will all operate puppets in the show

Some of their characters:

Adrien - A Wallaby and a Ringmaster

Ben - A King and a Giraffe

Tamara - A King and a Tiger

Costume

The cast will all be wearing a base costume of white long sleeved tops, white trousers, white high top boots and a white tunic with a glittery braid. They will add different items to their costumes when they are playing different characters.

How the actors interact with the audience

They might look at you directly when they are talking.

They will occasionally talk to the whole audience, they won't single anyone out.

They will show you objects.

They will invite you to clap your hands.

They will sing to you.

There is an occasion where they will come into the audience to interact. If you are uncomfortable you don't have to respond and our actors will leave you alone, they won't force you to take part in anything.

The Set

This is a model of the set in its most basic setup.



One of the main elements of the set is a floor which has been painted with blue, white and silver around the edges. There are 5 white/blue stage blocks, two of the smaller ones move on wheels. There are three long poles attached to the stage blocks with white material attached to them

The Theatre

Depending on which theatre you visit you will either have an allocated seat or seats will be unreserved, this means that when you arrive you choose where you want to sit from the spaces available. If you have an access need or a concern regarding seating contact the venue who will be pleased to help you. You can use the venue links provided earlier to find out more.

Music

There is a soundtrack of prerecorded music which includes a range of instruments. Sometimes the music is in the background whilst the actors tell the story, sometimes the actors sing along with the music. There are three occasions where you will hear the voices of actors not on stage. A man reads a poem, a woman read as poem and a child sings a song. These are pre-recorded.

Lighting

Lighting will be used on stage to light the set and the actors. Sometimes lighting will be used to focus on a smaller area of the stage, or to make sure we can see the actor and their puppet clearly.

Whilst there will not be a black out there will be low lighting in one section as there will be shadow puppetry.

Haze - The show uses an effect called haze, this is a very light fog like effect on the stage.

A snow canon (foam) will shoot 'snow' over the audience at the end of the show.

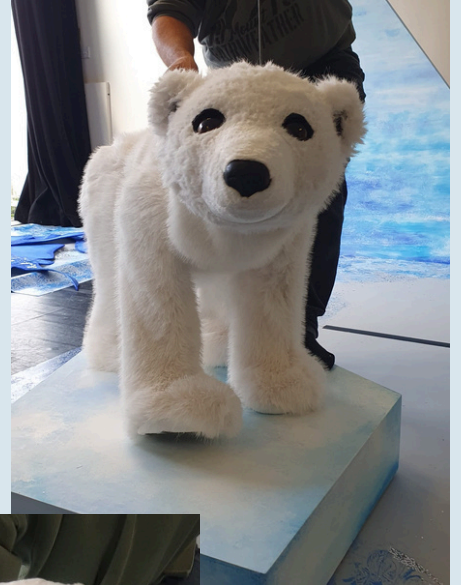
There will be a short section where UV light is used.

Puppets

There are a number of puppets used in the show to represent some of the animal characters.

The Polar Bear

There are two puppets to represent the polar bear, actors will control their movements. The polar bear does not speak. The polar bear does not go into the audience and will not do anything scary.



Other Animals

There are other animals in the show which are puppets. These include a messenger pigeon, stingrays and jellyfish. None of the puppets speak

